

Best in
Class
Module
Efficiency

Case Study Module: NQR256A

Application of the robust 48-cell module at a height of 1.785m withstanding extreme weather conditions

Habsburghaus, Grieskogel (Raxplateau), Austria

Installation by: Solare Energie GmbH

www.solare-energie.at



www.sharp.eu

SHARP
Be Original.



PV Modules

| | |
|---------------------------|---------------------|
| Product: | Sharp NQR256A |
| Number of Modules: | 64 |
| Rated power: | 256 Wp |
| Cells: | 48 |
| Compact size: | 1,318 x 980 x 46 mm |
| Best-in-Class-efficiency: | 19.8% |

Solar Power Plant

| | |
|---------------------|--|
| Plant size: | 16.38 kWp |
| Roof orientation: | South |
| Roof pitch: | 54 modules at 22° 10 modules at 36° |
| Mounting condition: | Roof parallel |

Earnings

| | |
|------------------------|-----------------|
| Specific annual yield: | 1,250 kWh / kWp |
|------------------------|-----------------|

Use of space

Due to the short eaves, the space can be used effectively with the compact 48-cell modules.



Spectacular delivery by helicopter



Operation of the material cableway with Sharp PV panels





The operator says:

„We're located at 1,785m height. Therefore, it is important to choose a robust module, which can withstand the strong snow and wind pressures of the region. The Rax region in particular is known for its constant wind pressures and high wind velocities.“

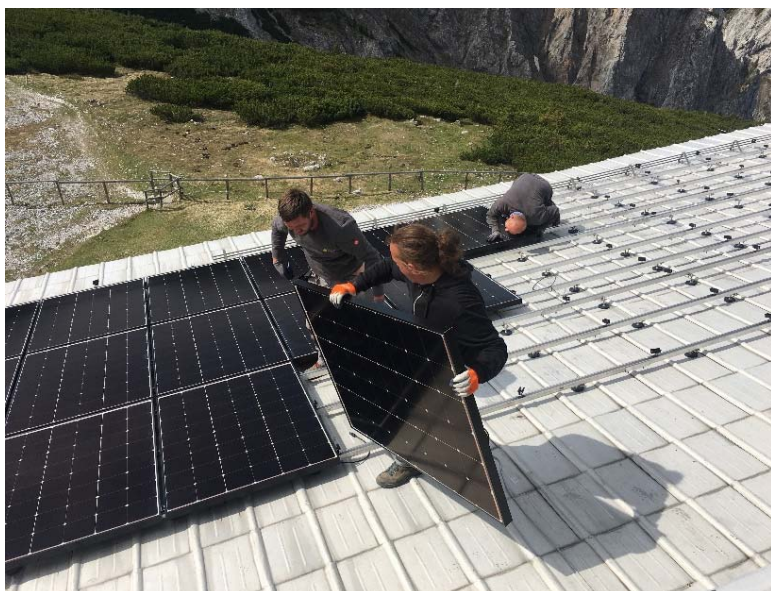
ÖAV Alpenverein Gebirgsverein, Christian Schreiter



The installer says:

„The compact size of the modules has certainly simplified our assembly. An exciting project – due to the fact that the solar energy not only provides power for the house but also for a material cableway, and without any diesel generator. Prior to the assembly of the new PV system, there was only a small kWp system, where the majority of the required energy supply was produced with a simple diesel generator.“

Solare Energie GmbH, Heimo Modre

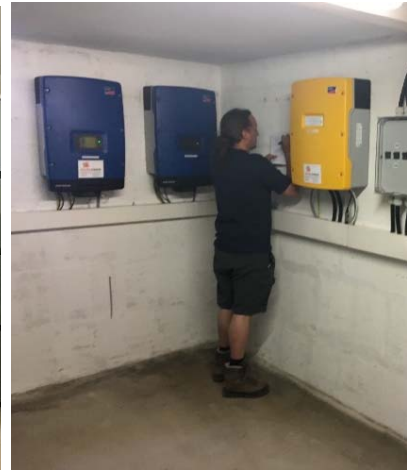


Further components

PV inverter: 2 x SMA
Tripower

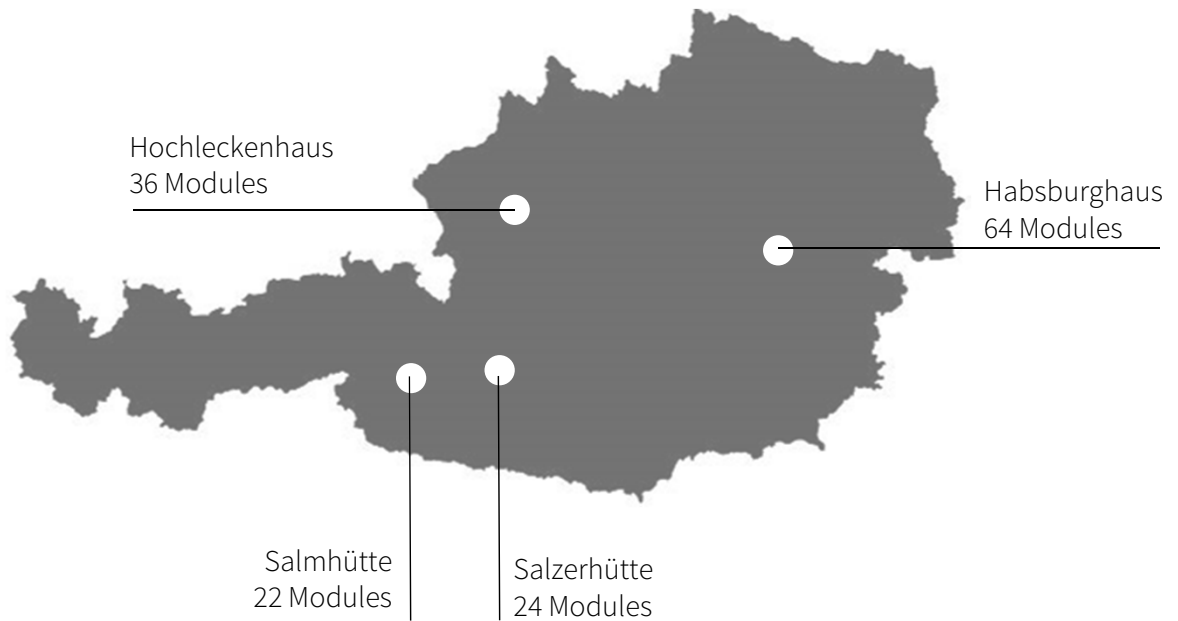
Battery inverter: 3 x SMA
Sunny Island 8.0

Batteries: Lithium-Ion
(67 kWh)



Various mountain installations of the panel in Austria:

Installation by Solare Energie GmbH





Sharp Electronics GmbH
Energy Solutions
Nagelsweg 33-35
20097 Hamburg
Germany
T: +49 (0)40 – 2376 – 2436
SolarInfo.Europe@sharp.eu

Foto Credits: Solare Energie GmbH

www.sharp.eu

SHARP
Be Original.